

Health Data Research and the HDR Facility

Anthony Brookes

HDR Facility Website - <https://brookeslab.le>

LEICESTER HDR FACILITY

[Home](#)

[About](#)

[Help Desk](#)

[Get Started](#)

Welcome to Leicester HDR Facility

Health data research is becoming a major topic of interest that bridges academia and healthcare, with funders very keen to support projects, and AI adding further exciting possibilities. To significantly boost health data research in the Leicester region, the College of Life Sciences recently provided a dedicated set of office spaces for an "HDR facility" (Room G21 in the Maurice Shock Building), within which practitioners and trainees from across the University and UHL will be able to claim a space, desk-share, or simply hot-desk as needed.

[Get Started](#)

Acknowledgements

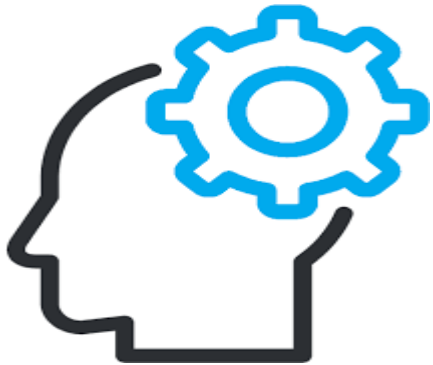
CLS Backing Prof Tom Robinson - Pro-VC & Head of CLS
 Prof Andrea Cooper - Dean of Research, CLS

HDRF Coleads Prof Anthony Brookes - Genomics & Health
Data Science
 Prof Tim Coats - Emergency Medicine
 Prof Huiyu Zhou - AI & Machine Learning Group
 Prof Ashiq Anjum - Distributed Systems

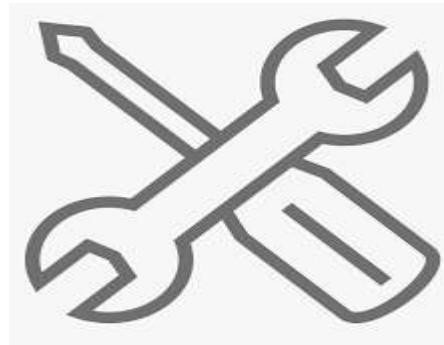
HDRF Enablers Prof Simon Gill - AI & Modelling
 Prof Nigel Brunskill - Renal Medicine &
Consultant Nephrologist
 Prof Kamlesh Khunti - Primary Care Diabetes &
Vascular Medicine
 Shaun Monkman - Governance, Ethics and Integrity

(Health) Data Science

Methods



Engineering



Application



F1 Racing Team

Methods



Engineering



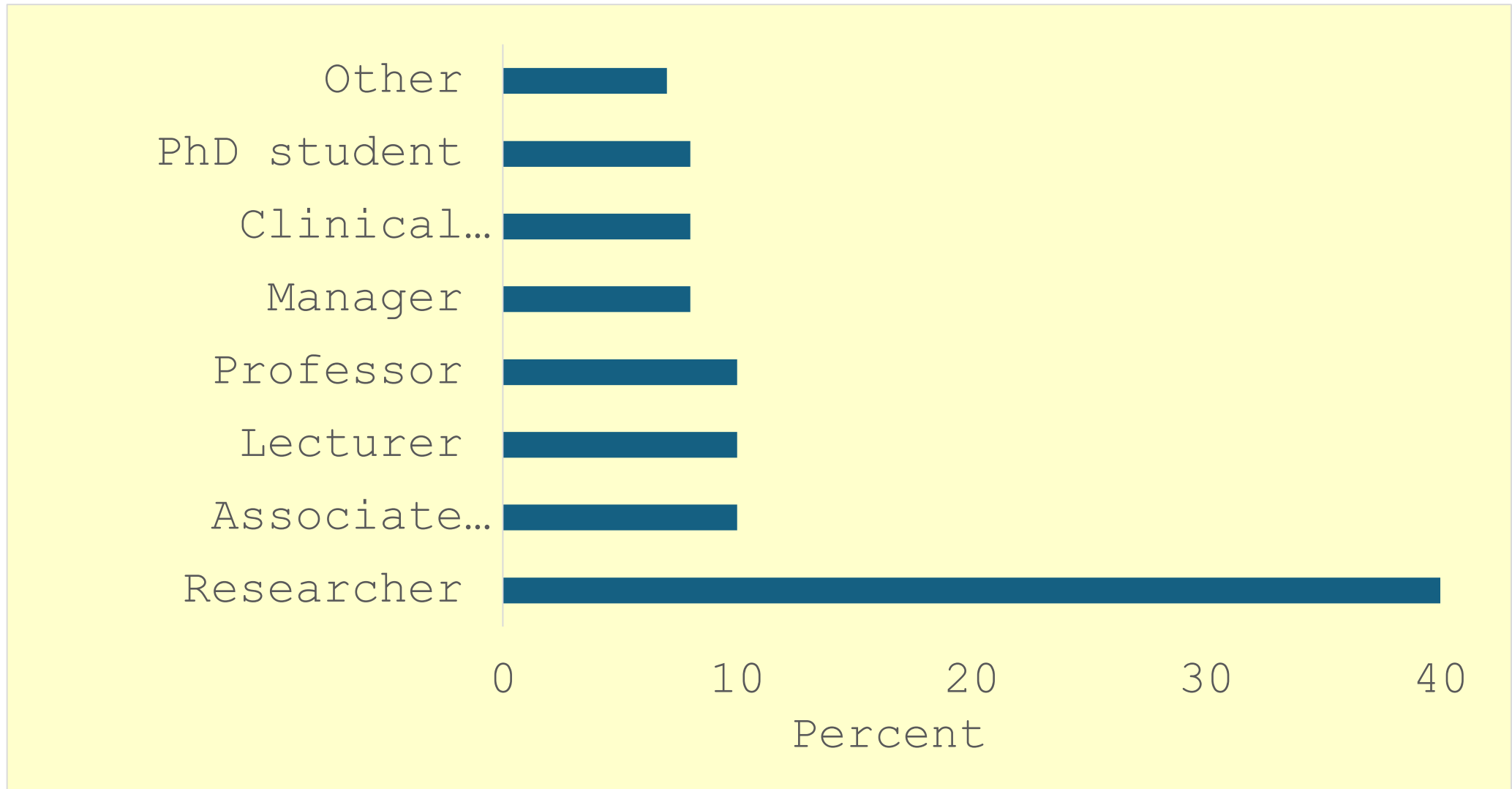
Application



Lewis Hamilton + Max Verstappen



Who wants/needs the HDRE ?

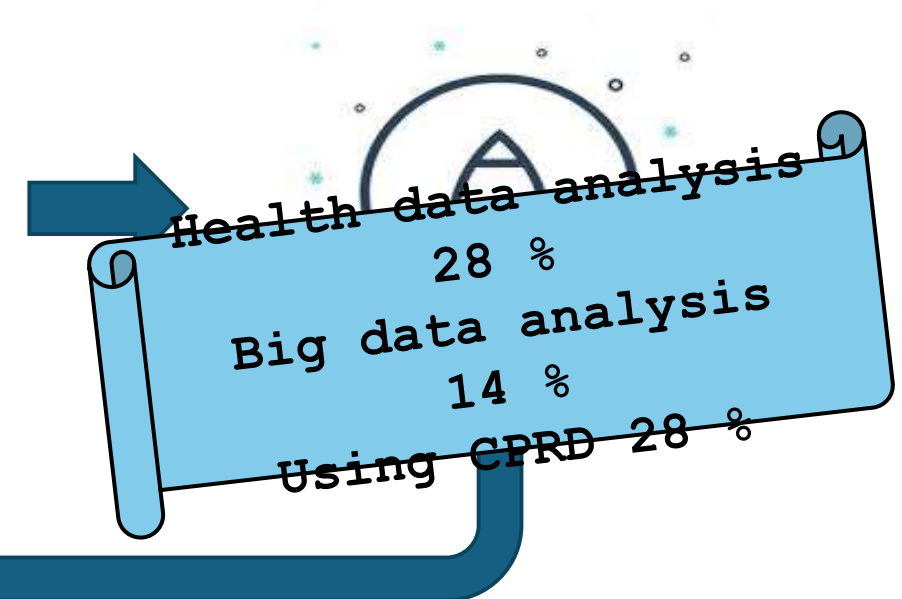
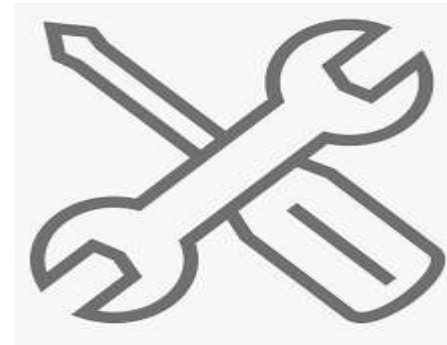
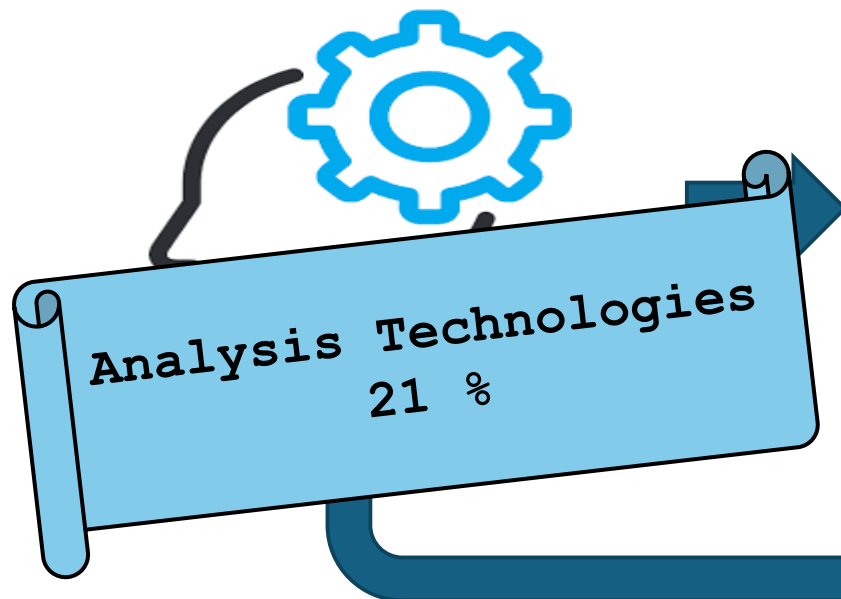


Not prominent:
statistics, data management, databasing standards,
data sharing, HPC, coding, curation/harmonisation,
data quality, PPIE, training...

Methods

Engineering

Application





UNIVERSITY OF
LEICESTER

UoL Collaboration with the Apollo Group

Tim Coats





Leicester starts initiative with Apollo to transform global healthcare

3 min read

The University of Leicester has signed a Memorandum of Understanding with one the world's largest integrated healthcare service providers, The Apollo Hospitals Group.

The Memorandum will strengthen existing links with India and sets out a mutual desire to promote international cooperation and explore collaborative education and research programmes, particularly in the fields of healthcare management, healthcare and data science.

President and Vice-Chancellor of the University of Leicester, Professor Nishan Canagarajah, said: "The purpose of this Memorandum of Understanding is to set



Apollo Healthcare



Unified Single Electronic Health Record

45+ Million Patients

15+ Years of Longitudinal Records

A Tripartite Partnership Between





UNIVERSITY OF
LEICESTER

Centre for Digital Health and Precision Medicine

A joint initiative



Leadership



Co-Directors



Nilesh Samani and Sujoy Kar

Executive Group



Professor Huiyu Zhou
Professor at University of Leicester



Professor Kamlesh Khuntia CBE
Professor of Vascular Medicine at University of Leicester



Ms. Ishita Shrively
Senior Vice-President at Apollo Research and Innovations



Dr. Alfred J Augustine
Dean at Apollo Institute of Medical Sciences and Research

Oversight Group



Professor Henrietta O'Connor
Provost & DVC at University of Leicester



Professor Thompson Robinson
Pro Vice-Chancellor & Dean of Medicine at University of Leicester



Professor Ravi Mahajan CBE
Director, Research & Innovation at Apollo Hospitals



Professor H Vinod Bhat
Vice-Chancellor at The Apollo University

The Chittoor and Leicester Hubs



CHITTOOR



LEICESTER



FEDERATED STRUCTURE

CDHPM: Vision and Mission

VISION

To become an internationally recognized research center that advances healthcare and its delivery through the development and deployment of novel digital health and precision medicine solutions.

MISSION



Funding the Center



AHEL / TAU Up to £500,000

These funds will be used over the initial three-years to (i) appoint key staff for the Centre (ii) develop the cloud infrastructure and (iii) pump-prime innovative projects in the Centre with the potential to progress towards clinical utility and/or secure external funding

University of Leicester Up to £575,000

Funding for (i) one four year PhD studentship for each of the first five years of the Centre (~ £90K per student; Total £450K based on 2024/25 fees and stipend rates) (ii) a discretionary award of **£25,000** per annum for the first five years (subject to annual review)

Long Term Sustainability

- a) securing external national and international **competitive grant funding**;
- b) funding obtained through **collaborations**, including with industry;
- c) Funding obtained through philanthropic support
- d) funding through **research studentships** based in the Centre; and
- e) ongoing intramural support from TAU and UOL, including **API commercialisations**

Potential Apollo data assets for CDHPM

- 45 million patient EPR based dataset.
- Data within a research TRE.
- Data governance system for research in place.
- Analyst funded and in place.
- Integrated with data science at Apollo University (AI academic unit).
- Current Questions:
 - Degree of curation
 - Population generalisability
 - Data quality
 - Alignment of academic cultures

People



The Centre will have **three** types of staff:

- **Core staff** – including the Co-directors, Deputy Manager, Data Scientists and Engineers employed by the Centre, and Students. The Core staff will be responsible for the day to day scientific running of the Centre
- **Faculty Members** - researchers, scientists or clinicians employed by, or associated with, Apollo University, the Apollo Healthcare System, or the University of Leicester who will lead or contribute to the development and execution of projects within the CDHPM.
- **Affiliated members and partners** – These will include external individuals, consortia or organisations who establish collaborations with the CDHPM through its core or faculty members, usually on a project-by-project basis.

Core functions such as HR, Finance and Facility maintenance will be provided by TAU and UOL

- Two initial meetings have been held.
- Development of mutual understanding underway (example “ICU”)
- First collaborative grant application in progress.
- Editorial being written
- Workshop on current research planned

Focus of work – detection of deterioration

- Validation of current Apollo illness severity score.
- Comparison of Apollo score and NHS EWS
- Integration of EPR with severity score (already underway in Apollo hospitals).
- Potential future areas:
 - General score v Condition specific scores.
 - Individualisation of risk scoring (a precision medicine approach).
 - Ethnic differences in accuracy of scoring.
 - Benchtop exploration of population variation and scoring accuracy.
 - Implementation science of scoring systems.
 - Clinical trial methodology for testing impact of scoring systems.
 - Limits of generalisability of scoring systems.

?

Governance Structure



The Executive Group

Joint Oversight Group

The Management Team

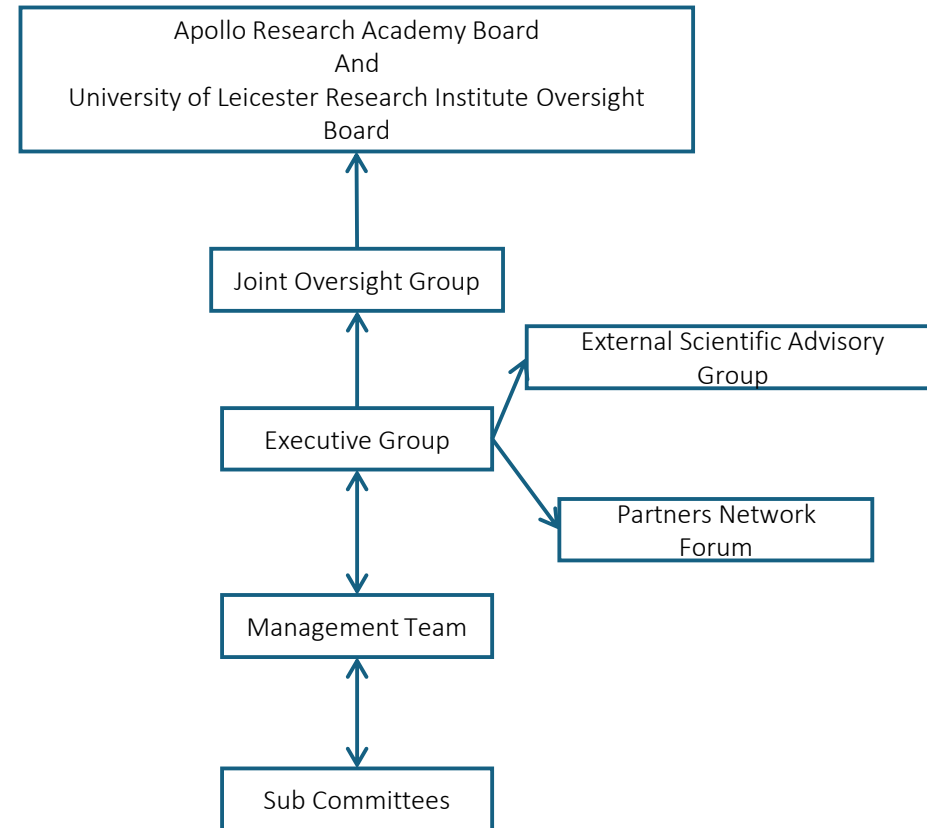
Sub Committees

- Data Governance Committee
- Clinical & AI Ethics Committee
- Infrastructure Committee
- IP & Commercialization Committee
- Communication Committee

External Scientific Advisory Group (ESAG)

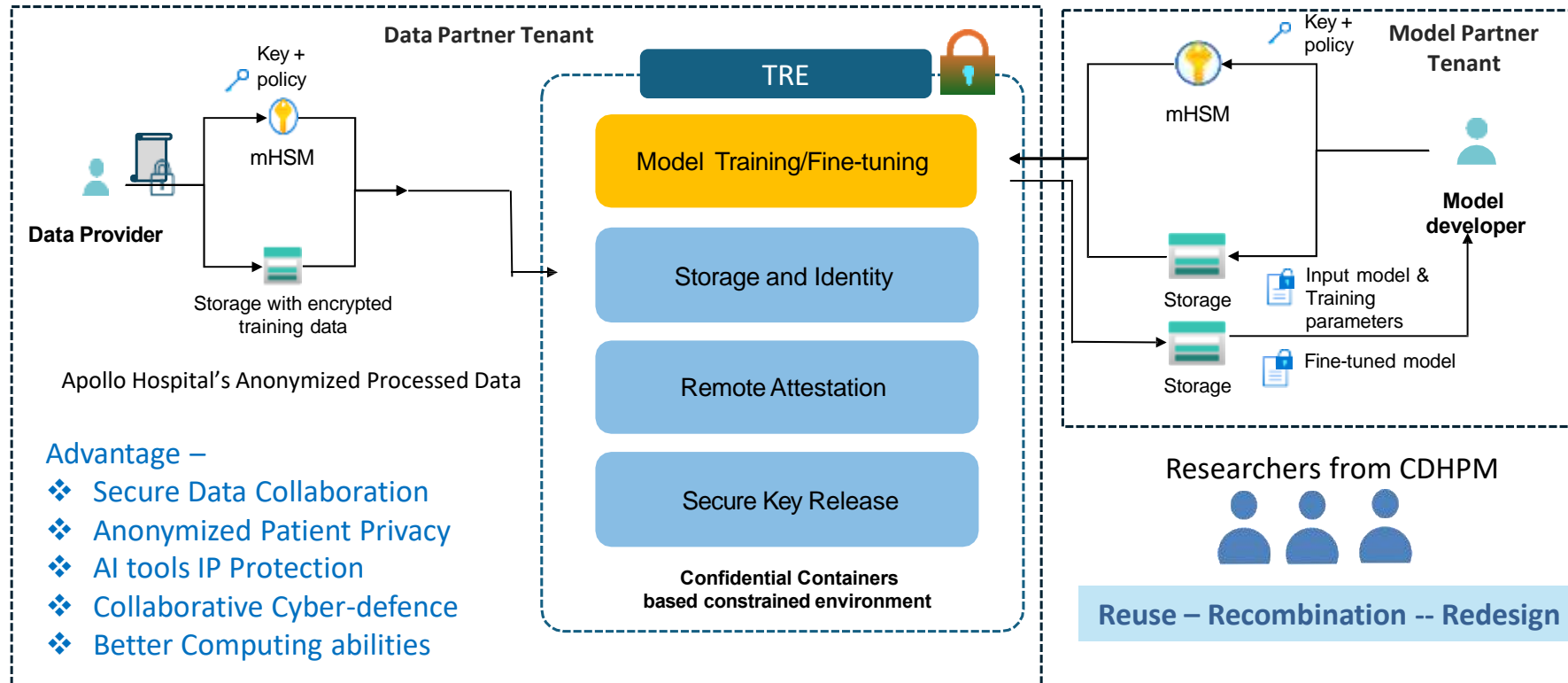
Partner's Network Forum

- Founding Partners
- Network Members
- Affiliate Members



Data Privacy & Security : Centre's Computing Architecture

Trusted Research Environment (TRE)



Examples of Modelling, Data science and AI research at the University of Leicester

Prof Simon Gill

Dean of Research & Enterprise for the College of Science and Engineering



Research Themes in the College of Science and Engineering

Space



Institute for Space

Centre for Exoplanet
Research



Space Park Leicester

National Centre of Earth
Observation

Environment



Institute for
Environmental Futures

Centre for Paleo. &
Biosphere Evolution

Environmental Health &
Sustainability

Sustainable Technology



Centre for Sustainable
Materials Processing

Centre for Sustainable
Resource Extraction

Centre for Digital
Manufacturing

Health



Institute for
Precision Health

Institute for Structural &
Chemical Biology



Biomedical
Research Centre

Culture & Heritage



Institute for
Digital Culture

Centre for Critical &
Creative
Geographies

Heritage Hub

AI & Data Science



UNDERPINNING CAPABILITY

Turing University Network / Centre for AI, Data Analytics & Modelling (AIDAM)



UNIVERSITY OF
LEICESTER

LAMDA

Leicester Academy for Modelling, Data and Artificial Intelligence

Research Themes



**Environment &
Sustainability**



Health



Space



**Society,
Heritage &
Culture**



Fundamentals



**Business,
Finance &
Economics**



Special Interest Group in Artificial Intelligence (AI) and Higher Education



Environment & Sustainability

Digital Twins for Tropical Wetlands (UKRI FLF)

Robert Parker (Physics - EO)



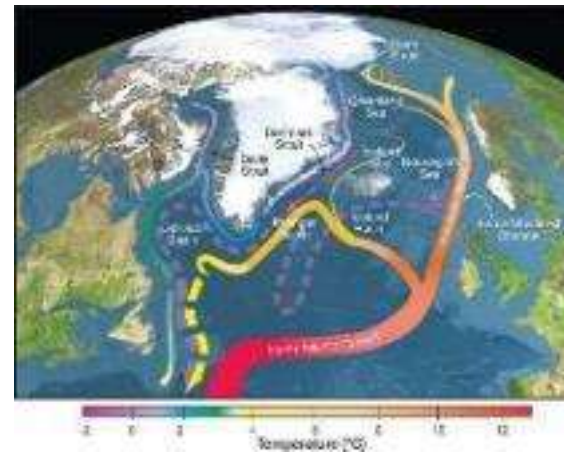
Digital Twins for Sustainable Land Management (EPSRC – UKRI AI for Net Zero hub)

Heiko Balzter (GGE) Ashiq Anjum (CMS)



Climate Tipping Points (ARIA)

Valerio Lucarini (CMS)



Digital Twins for Ceramic Manufacturing (EPSRC)

Jingzhe Pan (Engineering)



National Centre for
Earth Observation

NATURAL ENVIRONMENT RESEARCH COUNCIL



IGNITE Manufacturing Hub (UKRI)

Hongbiao Dong (Engineering)

New research hubs to cut carbon and reshape UK manufacturing





UNIVERSITY OF
LEICESTER

Health

University of Leicester and The Apollo
University launch global research centre for
digital health and precision medicine

20 January 2025



**Self-learning AI-based
digital twins for
accelerating clinical
care in respiratory
emergency admissions
(EPSRC)**

CMS/Respiratory/Cardiovas
cular/Media &
Comms/Population Health
Sciences



**PRE-ACT : Prediction of Radiotherapy side
effects using Explainable AI for patient
Communication and Treatment modification
(Horizon Europe/Innovate UK)**

Christopher Talbot (GGB)
Tim Rattay (Cancer Research Ce



NIHR | Leicester Biomedical
Research Centre

Kamlesh Khunti (Leicester Diabetes
Centre)

Laura Grey (PHS)
**Data Innovation for Multiple Long-Term Health
Conditions and Ethnic Health**



DIRAC HIGH PERFORMANCE COMPUTING FACILITY

Supporting the STFC Theory Community

Mark Wilkinson (Physics)

**A new light on Jupiter's
auroral processes with
James Webb, Hubble and
Juno (STFC)**

Jonny Nichols (Physics)

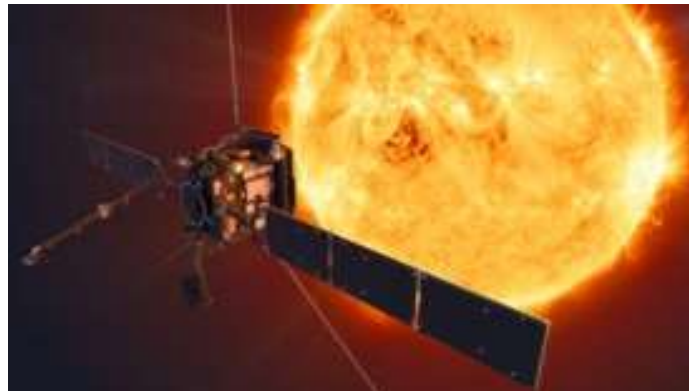


ALICE HCP (4000 cores)



**Thermal digital twin of
Solar Orbiter (ESA Airbus)**

Ashiq Anjum (CMS)



Space

**Novel probes of the distant
universe using Gamma Ray
Bursts (STFC)**

Nial Tanvir FRS (Physics)

**Leicester cosmic explosion expert among
exceptional scientists elected as Royal
Society Fellows**

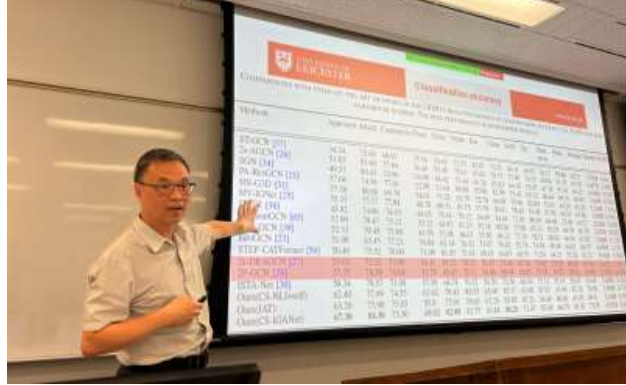
20 May 2023



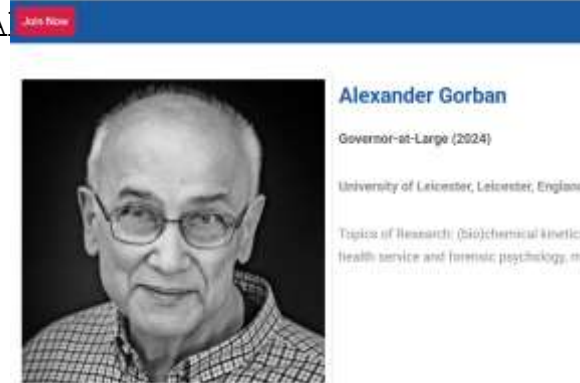
Distinguished Artificial Intelligence Scholar Award for
2025 from the

US National Academy of Artificial Intel

Huiyu (Joe) Zhou (CMS, co-director AIDA



INTERNATIONAL NEURAL NETWORK SOCIETY



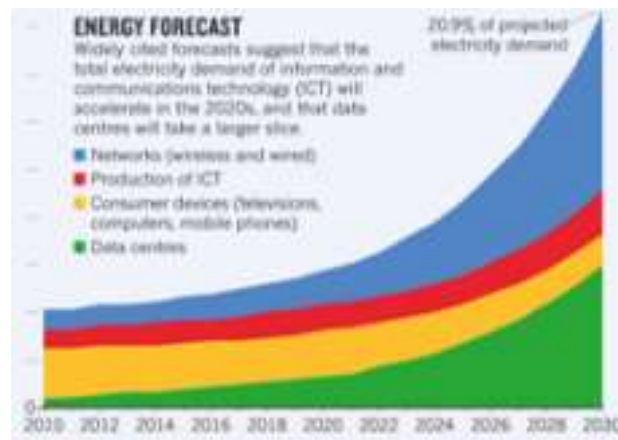
**ULTRACEPT: Ultra-layered perception with
brain-inspired information processing for
vehicle collision avoidance**

Shigang Yue (CMS)



**Sustainable Data Centre
Digital Twins (CGI)**

Ashiq Anjum (CMS)



Fundamentals

**Personality Traits and Drug
Consumption**

Elaine Fehrman; Vincent Egan
(Psychology)

Alexander Gorban; Evgeny
Mirkes (CMS)





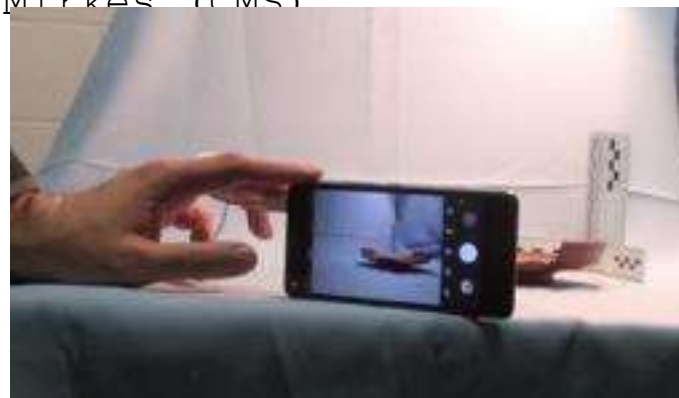
Breaking the Dickens code (AHRC)

Claire Wood (English)
Huiyu (Joe) Zhou (CMS)



Arch-I-Scan (AHRC)

PI: Penelope Allison (Archaeology)
Co-I's: Alexander Gorban; Evgeny
Mirkes (CMS)



Museum Data Service (AHRC)

Ross Parry (Museum Studies)

Access to UK's cultural heritage is
revolutionised by Museum Data Service
launch

13 September 2024



Professor Ross Parry, Director of the University's Institute for Digital Culture at the London launch. Photo: James Winspear





**Development of AI software
for a credit-chasing tool
with financial software
company Draycir (Innovate
UK)**

Will Darler (College of



Professor Xue Zhou

Professor in AI in Business Education



School/Department: Marketing and Strategy, School of
Email: xue.zhou@le.ac.uk

**The Impact Of Technological
Transformations On The
Digital Generation
(Horizon)**

Athina Karatzogianni
(Criminology, Sociology and
Soci



**Development of Customer
Intelligence software with The
Audience Agency (Innovate UK)**

Will Darler (College of
Business)



Rutland (Primary Care) Data for Research

Anthony Brookes
(for Nigel Brunskill)

The Aim

To make primary care data available for research purposes

The Problems

- Each general practice is data controller for its own practice data
- ICB has access to aggregated anonymised PC data for service planning but not for research
- Individual agreements needed with each practice to process their data for research
- Need to be accompanied by substantial assurance about data governance

The Solution



Leicester, Leicestershire & Rutland

Data **for** Research

Information for GPs and practice managers about the work of the Primary Care Data for Research Forum and what we want to achieve for Leicester, Leicestershire and Rutland (LLR).

The Solution

- GDPR compliant data transfer from SystmOne
- Local NHS data processor – LHMIS
- PRIVITAR as secure data privacy solution for LHMIS
- Only for approved research studies subjects to some form of institutional review
- No patient identifiable data
- Secure processes needed for anonymised data transfer

11.0 - Schedule 1– Data Items

Table Name	Table Description
SRActivityEvent	The SRActivityEvent file records the specific consultation activities associated with an event. These are entered via the Event Details dialog within the patient record. They can also be automatically entered when performing a care plan. Each SRActivityEvent will have a corresponding row within the SREvent table. A row in SREvent may not have a corresponding row within the SRActivityEvent table.
SRAppointment	The SRAppointment file lists all appointments for all organisations.
SRAppointmentAttendees	The SRAppointmentAttendees file lists all the attendees recorded against a patient's appointment. This table has been superseded by SRAttendee and will be removed in the 09/05/19 release.
SRAppointmentVisitOutcomes	The SRAppointmentVisitOutcomes file lists the information recorded when entering outcomes for appointments and visits.
SRCode	The SRCode file shows the Read codes recorded for a patient including the CTV3 Read code and the numeric value for that entry, if appropriate.
SRChv3Hierarchy	Provides the hierarchical relationships between CTV3 Read codes. Each CTV3 Read code is listed against all of its parent CTV3 Read codes including the level at which the relationship exists (e.g. parent, grandparent etc).
SRGPPPracticeHistory	The SRGPPPracticeHistory file shows the practice history for each patient.
SRImmunisation	The SRImmunisation file shows the details of immunisations for patients including the immunisation name and dose.
SRImmunisationContent	The SRImmunisationContent file shows the details of immunisations including the immunisation name and its contents.
SRMedicationReadCodeDetails	The SRMedicationReadCodeDetails file allows users to map a Read code to a Multilex drug. NB - This is a deprecated table and will be removed in a future release. This is not SystmOne data (no drug Read Code is being recorded in the front end), and the mappings from IDMultiLexProduct to DrugReadCode are one to many. Please use SRPrimaryCareMedication for associated data analysis.
SRPatient	The SRPatient file provides a list of the patients registered at the organisations included in the extract.
SRPatientContactDetails	The SRPatientContactDetails table shows all current contact details and types for each patient.
SRPatientContactProperty	The SRPatientContactProperty table contains information recorded against a visit or diary entry. For example, the purpose of the contact being made.
SRPatientGroups	The SRPatientGroups file shows all the patient groups recorded against the patient. Patient groups can be used to make multiple SystmOne patients members of the same group or family within the system. This is often used to create a list of patients who are cared for in the same residential or nursing home, for example.
SRPatientRegistration	The SRPatientRegistration file provides registration details for patients registered at the organisations included in the extract.
SRPrimaryCareMedication	The SRPrimaryCareMedication file shows the details of medication for patients including the Multilex name of the medication and dosage. This is mainly used in the GP and community modules, but can also be used in Palliative Hospitals.
SRReferralIn	The SRReferralIn table shows the details of referral ins for patients including the referral category and reason for referral.
SRReferralInIntervention	SRReferralInIntervention provides the list of interventions set against a referral.
SRReferralInReferralReason	SRReferralInReferralReason provides the list of reasons entered against a Referral In when making the referral.
SRReferralInStatusDetails	The SRReferralInStatusDetails file shows individual status updates for a referral in.
SRReferralOut	The SRReferralOut table shows the details of referral outs for patients.
SRReferralOutStatusDetails	The SRReferralOutStatusDetails file shows individual status updates for a referral out.
SRRepeatTemplate	The SRRepeatTemplate file shows the details of medication repeat templates for patients including the Multilex name of the medication.
SRServiceDeliverySchedule	The SRServiceDeliverySchedule file contains all the details about each service schedules recorded for a client at a social care organisation.
SRVariableDoseCDMedication	The SRVariableDoseCDMedication file shows details for medication recorded as variable dose controlled drugs.



Data Processing Agreement

Between LLR GP Practices (acting as Joint Data Controllers for the LLR DfR database) and
Leicestershire Health Informatics Service (Data Processor)



Message for Patients about the LLR Data for Research Project

This local project is led by a forum of both NHS and University of Leicester academic staff and includes representatives from local clinical commissioning groups, the Local Medical Committee, GPs and Information Governance.

The GPs in this practice look after your medical records and data. They have agreed to NHS Leicestershire Health Informatics Service (LHIS) legally extracting and processing data from the practice so that it can be held and then released in an anonymous way for research purposes. 'Anonymised' means that you will not be identified. Researchers' requests for use of this data will be made via an application form, and the LLR DfR Forum members, together with a GP representative, will decide whether data requests for anonymous should be granted.

Safe and secure software technology is being used and all the work will comply with the existing data protection legislation (GDPR/DPA 2018).

This practice has reviewed and signed a Data Processing Agreement (DPA) with LHIS and also has a Data Protection Impact Assessment (DPIA) in place which covers any risks to the data associated with LLR Data for Research.

We are supporting the project because the data being collected can make a huge contribution to the way research is conducted in and beyond our area: research which aims to advance future treatment and care for you and for other patients.

Our Privacy Statement about this project provides more information and is on our practice website.

Data Protection Impact Assessment for GP Practice Use

DPIA Title:	Leicester, Leicestershire & Rutland Data for Research Projects. (LLR DfR)
Data Protection Officer consulted (date):	30/02/2020
Data Protection Officer comments:	Validated by MLCSU. Please keep a copy in your records -Approved by DPO 30/02/2020 Reviewed and approved by Umar Sabat, IG Health 01/06/21
Data Protection Officer signature:	
Caldicot Guardian consulted (date):	
Caldicot Guardian comments:	
Caldicot Guardian signature:	
SIRO approval (date):	
SIRO comments:	
SIRO signature:	

LLR-DfR Website -

<https://brookeslab.le.ac.uk/llr-dfr/>


PRIMARY HEALTHCARE DATA FOR RESEARCH[Home](#)[About](#)[Access Process](#)[Help Desk](#)[Acknowledgements](#)[Get Started](#)

Anonymous data from 30 GP practices in Leicester, Leicestershire and Rutland, have been pooled and made available for use in ethically-approved healthcare research. A support team and an **online tool** are provided to enable bona fide researchers to safely explore and profile this ***Leicester, Leicestershire and Rutland Data for Research (LLR-DfR)*** dataset, in advance of seeking secure access via an assisted and responsible access request process.

ABOUT

The LLR-DfR dataset is securely managed by the non-profit Leicester Health Informatics Service (LHIS). They will provide customised portions of the data for approved research, for a minimal fee, with this process being facilitated by the research group of Professor Anthony Brookes. This team also provides a **dedicated interface** and support service via which the dataset can be initially profiled to evaluate its suitability for use in addressing specific research questions.

LLR-DfR Exploration Tool - <https://fair-hd4r.ca>

 Cafe Variome Central Discover Hello Anthony ▾

Discover - Query Builder

PATIENT INFORMATION
Age: 58 - 99
Gender: Male Female Any

SNOMED CT

Add

Remove

MEDICATION

Add

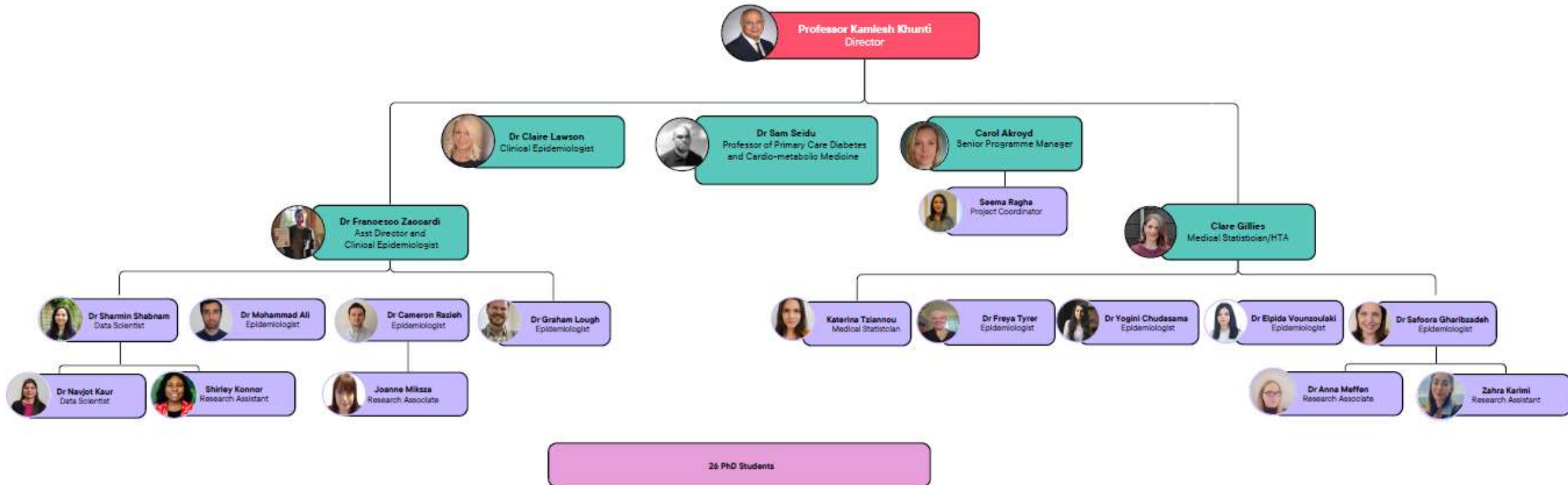
Remove

Build Query Reset

An Introduction the Leicester Real World Evidence Unit (LRWE) and the Clinical Practice Research Datalink (CPRD)



Joanne Miksza



What is the Clinical Practice Research Datalink (CPRD)?



Longitudinal primary care
records



Linkage to health datasets



60 million patients



UK network of GP practices

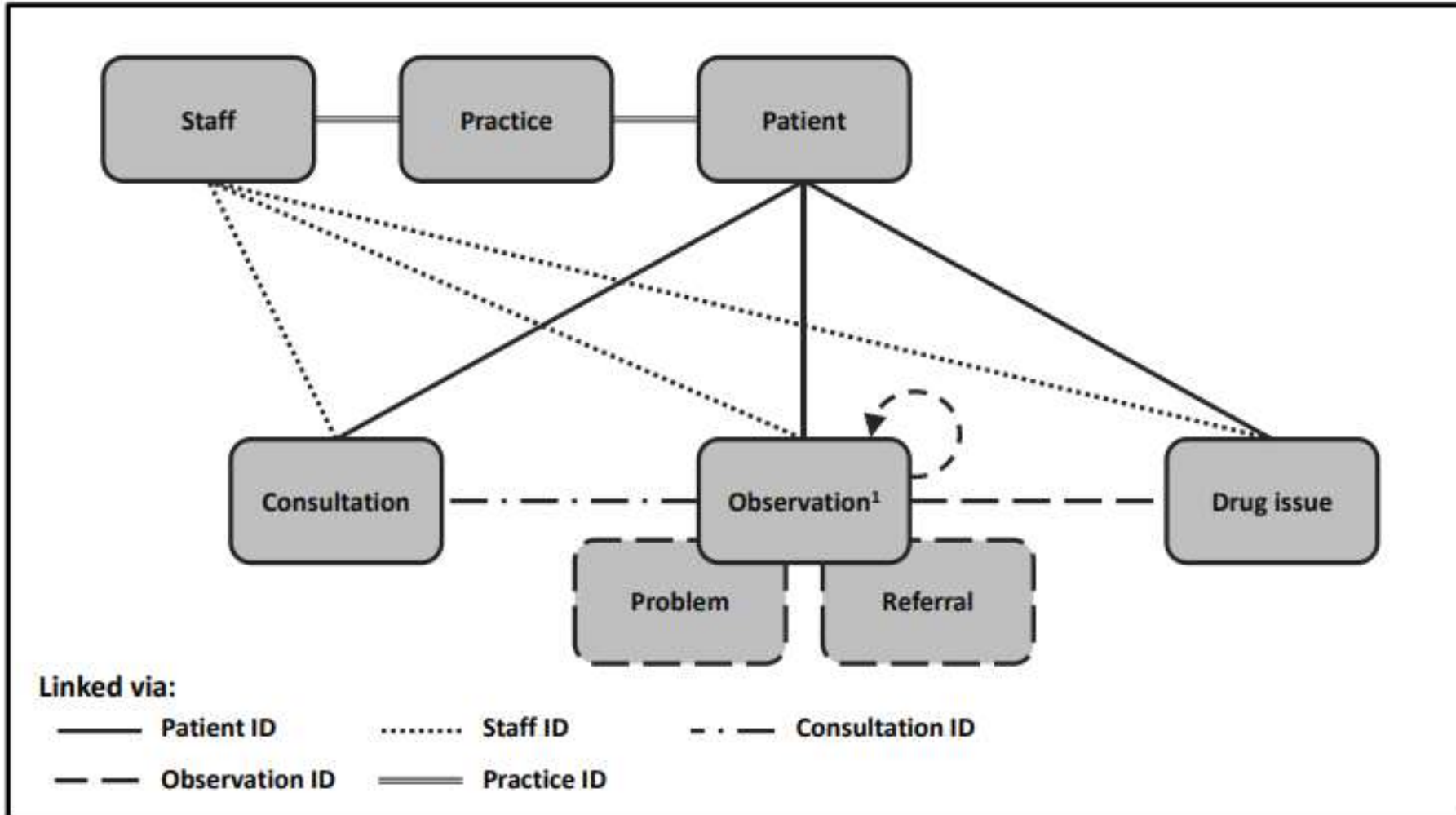


16 million recruitment pool



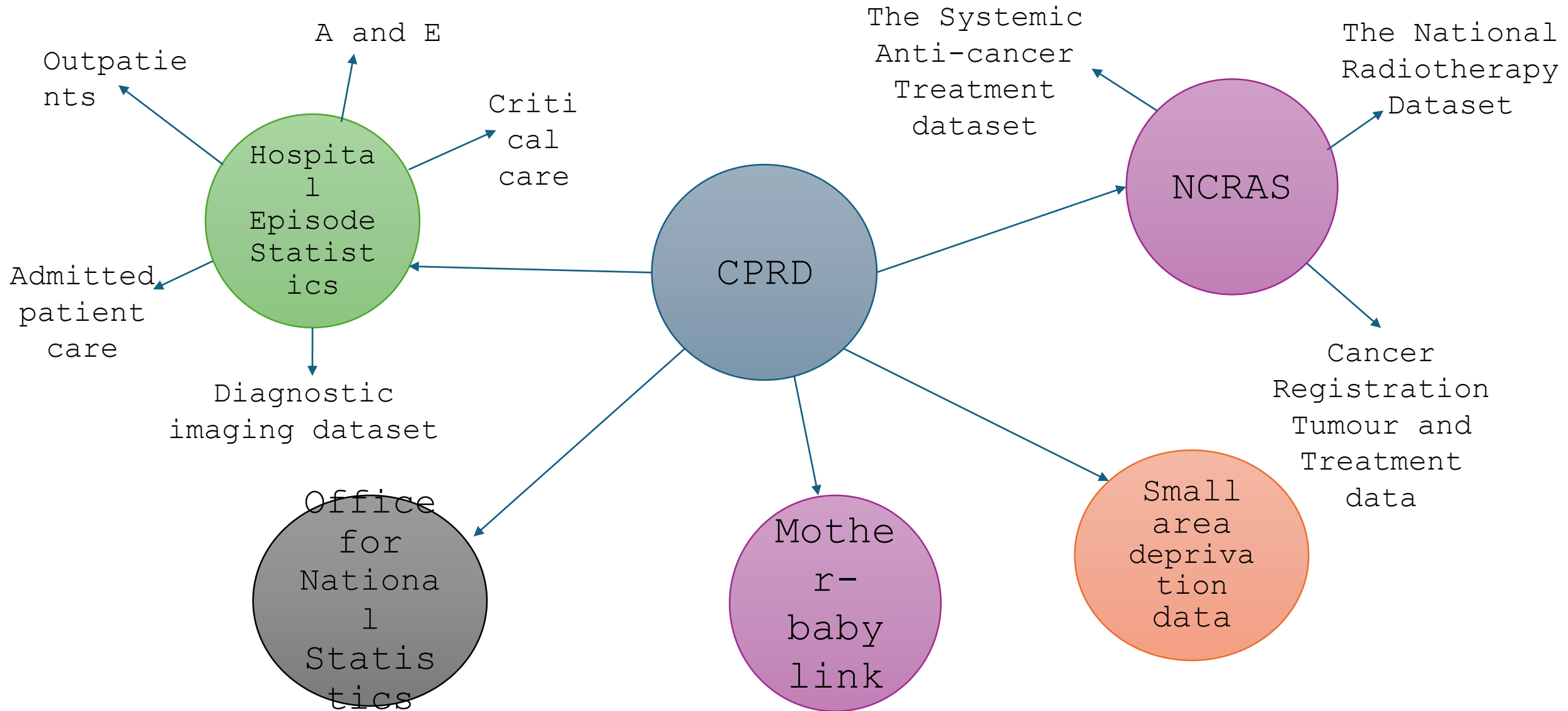
Retrospective and prospective

The CPRD Aurum data set





Linked datasets





Process for applying to use C data



- LRWE have a multi-study license
- A protocol for the study has to be submitted through eRAP system This must be approved by CPRDs ethics committee.
- Feasibility counts can be requested from CPRD fob holders
- There can be several rounds of amendments/approvals
- Data will be extracted by a fob holder
- Linkage datasets can be requested
- Data is ready to be cleaned and analysed



Where to find out more

- Email the LRWE unit: Clare Gillies
clg13@le.ac.uk, Sharmin Shabnam
ss1279@le.ac.uk
- CPRD online training modules:
<http://learning.mhra.gov.uk/mhra/index.jsp>
- <https://www.cprd.com/>
- enquiries@cprd.com